



**SRIVARI**  
FOUNDATION



+91 9840823933

## **HAPPY HOMES**

### **NEAR PAMMAL REGISTER OFFICE**



**Plot No:53,Victoria Street, Kamarajapuram, Anagaputhur.**



**No:14, Church Road, C.Pallavaram, Chennai-45.**

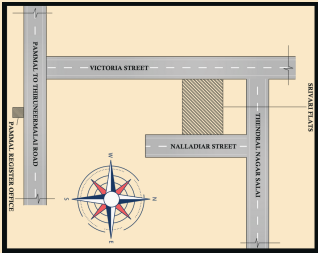
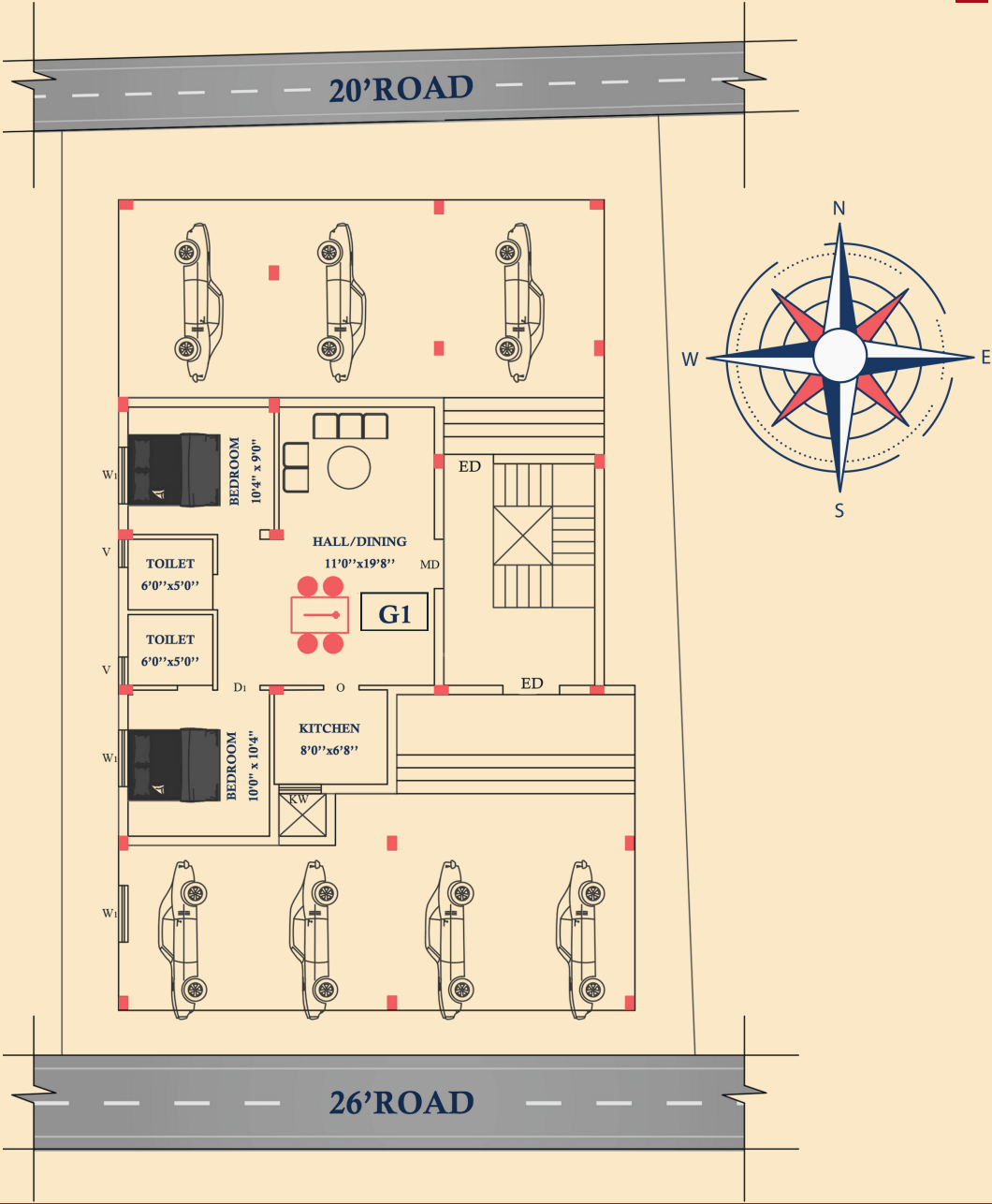


**gmuralioffice@gmail.com**



**www.srivarifoundation.com**

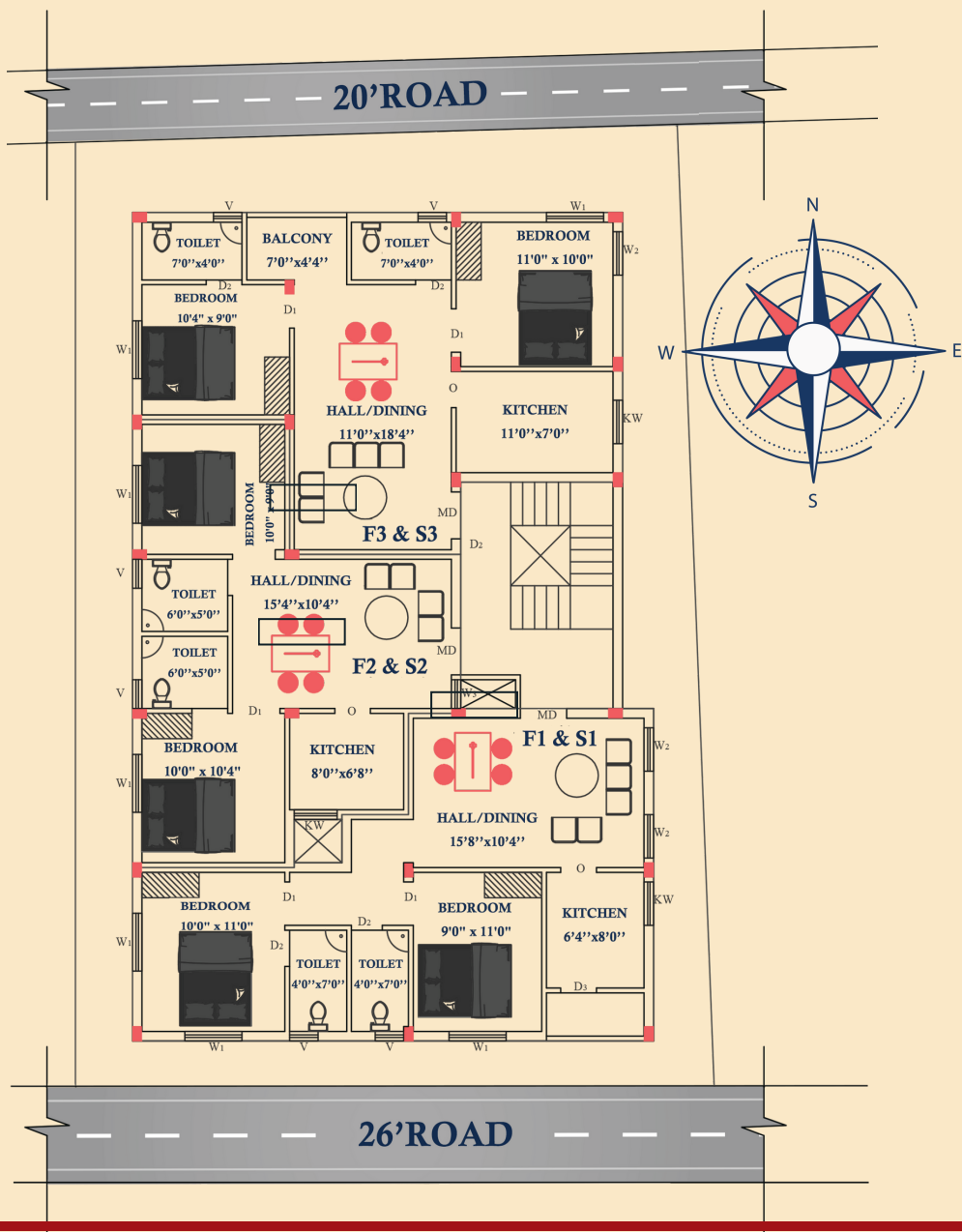
# GROUND FLOOR



GOOGLE  
MAP  
QR Code



# FIRST AND SECOND FLOOR



## AREA DETAILS

G1	875 SQ FT
F1 & S1	850 SQ FT
F2 & S2	705 SQ FT
F3 & S3	863 SQ FT



# SPECIFICATION

## STRUCTURE

**RCC Framed Structure as designed with walls using AAC blocks.**

## FINISHES

### Joineries:

- **Main door** - First Quality teak frame with teak door with necessary fittings.
- **Internal doors** - Readymade Flush doors resting on teak wood frame.
- **Windows and Ventilators** - Sliding and made of UPVC with safety grills.

## SERVICES

### Electrical:

- **Electrical Points in each room** – 1 fan, 2 lights, 1no-5A, additional 2no-5A point in hall for TV, AC provision in both bedrooms.
- **Toilet** – 1 light, 1-5A and 1-15A for Geyser.

### Flooring and Dadoing:

- **Room flooring** – 600 x 600 Vitrified tiles.
- **Toilet flooring** - Anti-skid tiles for Bathroom floor.
- **Toilet walls** – Dadoing to a height of 7'0" using glazed tile.

### Plumbing:

- 1 - EWC, 1 - IWC, 1 - washbasin in each toilet.

## ADD ONS

- **KITCHEN** - Galaxy black Granite Top Counter and Dadoing up to 2'0" height with glazed tiles
- **CAR PARK** - Individual Covered Car separately earmarked for each apartment.

